

APPLIED MATHEMATICS VS. PURE MATHEMATICS

Applied mathematics 20 is designed to give a broader approach to mathematical problem solving and is a general stream, while *Pure Mathematics 20* is designed with the narrower focus of facilitating entry into calculus courses.

All Math courses are worth 5 credits each.

PURE MATHEMATICS 20 (5 CREDITS EACH)

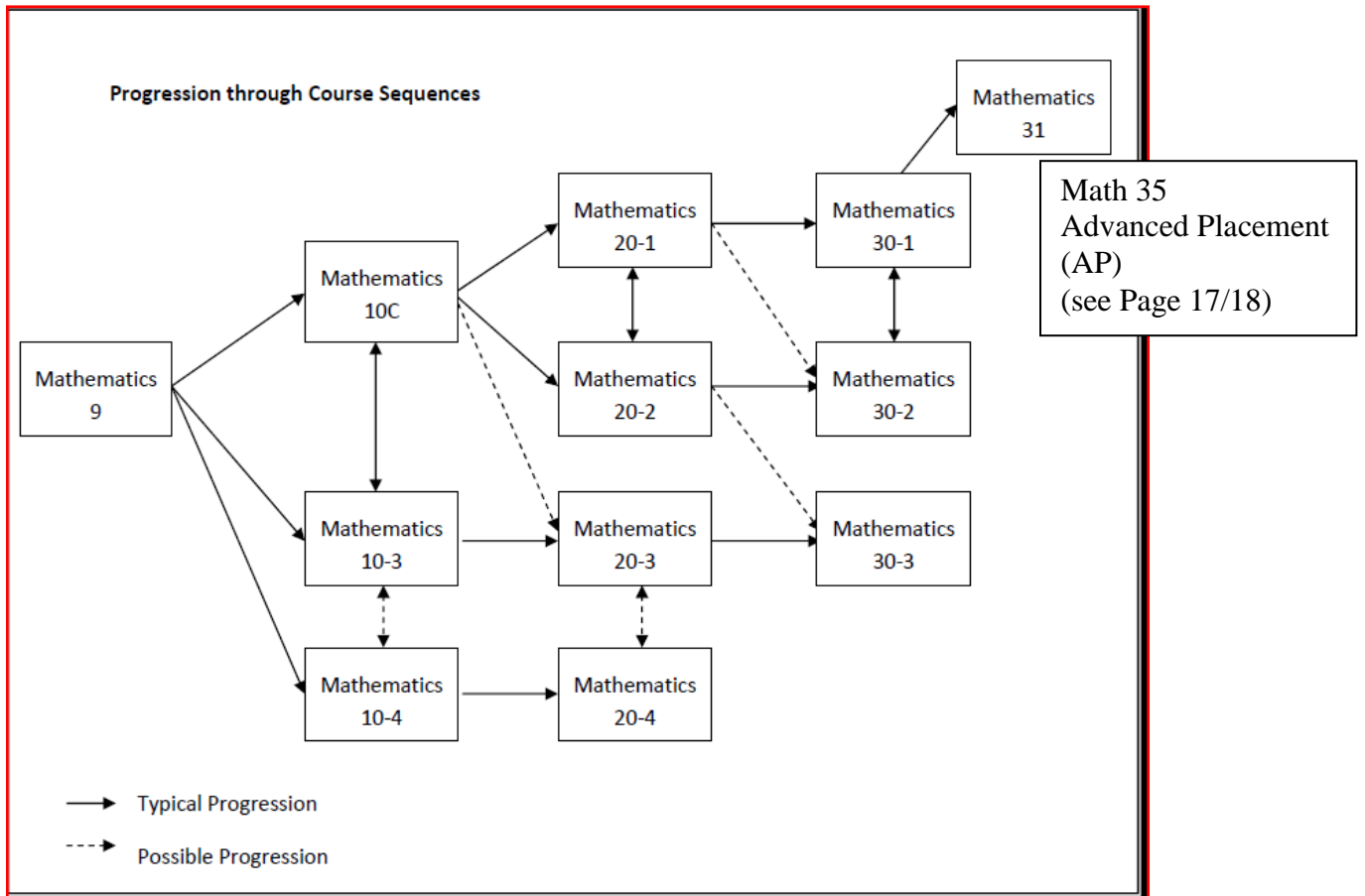
This sequence is designed for students with an interest and aptitude in mathematics and for those intending to pursue post-secondary studies at a university or in a mathematics- intensive program at a technical school or college. Students considering post- secondary options should obtain guidance when choosing mathematics courses.

APPLIED MATHEMATICS 20 (5 CREDITS EACH)

Applied mathematics gives students a clearer picture of why they are learning the mathematics and motivates them in learning. Students experience mathematics as being dynamic and useful in their careers and everyday life.

NEW MATH CURRICULUM for Students beginning Gr. 10 in 2010-2011

There have been new changes to the high school math curriculum. Those students who are beginning Gr. 10 in the 2010-2011 school year will have new Math curriculum with different streaming of the courses. Beginning September 2010, the sequence of high school Math courses will be as follows:



The content of the three course sequences (-1, -2, -3, see diagram above) differs so students gain the necessary knowledge, skills and attitudes to be successful both in the workplace and in a variety of post-secondary programs.

- Students have a choice of two math courses when entering Gr. 10 at CFL: 10C and 10-3.
 Students choosing 10C have two sequence options out of Gr. 10: 20-1 and 20-2. These sequences are ideal for students considering post-secondary studies in most colleges and universities, and some trades.
 Students choosing 10-3 follow the 20-3 and 30-3 course sequence through Gr. 11 and Gr. 12. This

course sequence is ideal for students entering some trades or the workforce immediately after high school.

- Students who enroll in 10C don't need to choose their course sequence until Gr. 11. This gives students an extra year to decide which sequence best suits their interests and their future needs.
- Students can transfer between the -1 and -2 course sequences in grades 11 and 12, which allows them to change their math program if their future goals change.

PREREQUISITES

The prerequisite for Math 10C is 55% or more in Grade 9 Mathematics. Students with a mark below 55% will be placed in Math 10-3.

Students with a Math 9 mark below 55%, but who want to take Math 10C will need to take Math 10-3 prior to enrolling in Math 10C.